



Titan 2000

TFT based DR System

comed
The Power of Passions

Comed Medical System Co., Ltd
Office: 707, Woolim, Lion's Valley, 311-3 Sangdaewon-dong,
Jungwon-gu, Seongnam-si, Gyeonggi-do, Korea
Tel.: +82-31-737-2211 Fax: +82-31-737-2210

Factory: 58, Hakkong, Chowel, Gwangju, Gyeonggi-do, Korea
Tel.: +82-31-764-7321 Fax: +82-31-764-7324

www.comed.co.kr

comed
The Power of Passions

COMed

The Power of Passions

Principle Differences of comed is...

- ☑ Holding **Source Technology** of Core Components
- ☑ Providing Real-time **Custom Built Specification**
- ☑ Supporting Customer Service through **Global Network**

a small step towards Digital...

Do you still have a doubt going digital?

Well, here is a good news for you. All you need to do is take a single step forward with Titan2000 digital radiography system. Now you can equip full digitalized radiography system in your facility within tight budget. With its compact design and size, Titan2000 needs only a small space.

Pull your shoulders back

With Titan2000 you will benefit from numerous advantages in digital radiography. Filmless procedure will remarkably improve workflow while you spend more time with your patient instead of a darkroom.

Collateral advantages from strictly controlled radiation dose usage, prevention of pollution caused by chemicals from film development, and space saving from film storage can be achieved.

Equipped with comed's accumulated experience in market over a decade, you can put your trust in Titan2000.

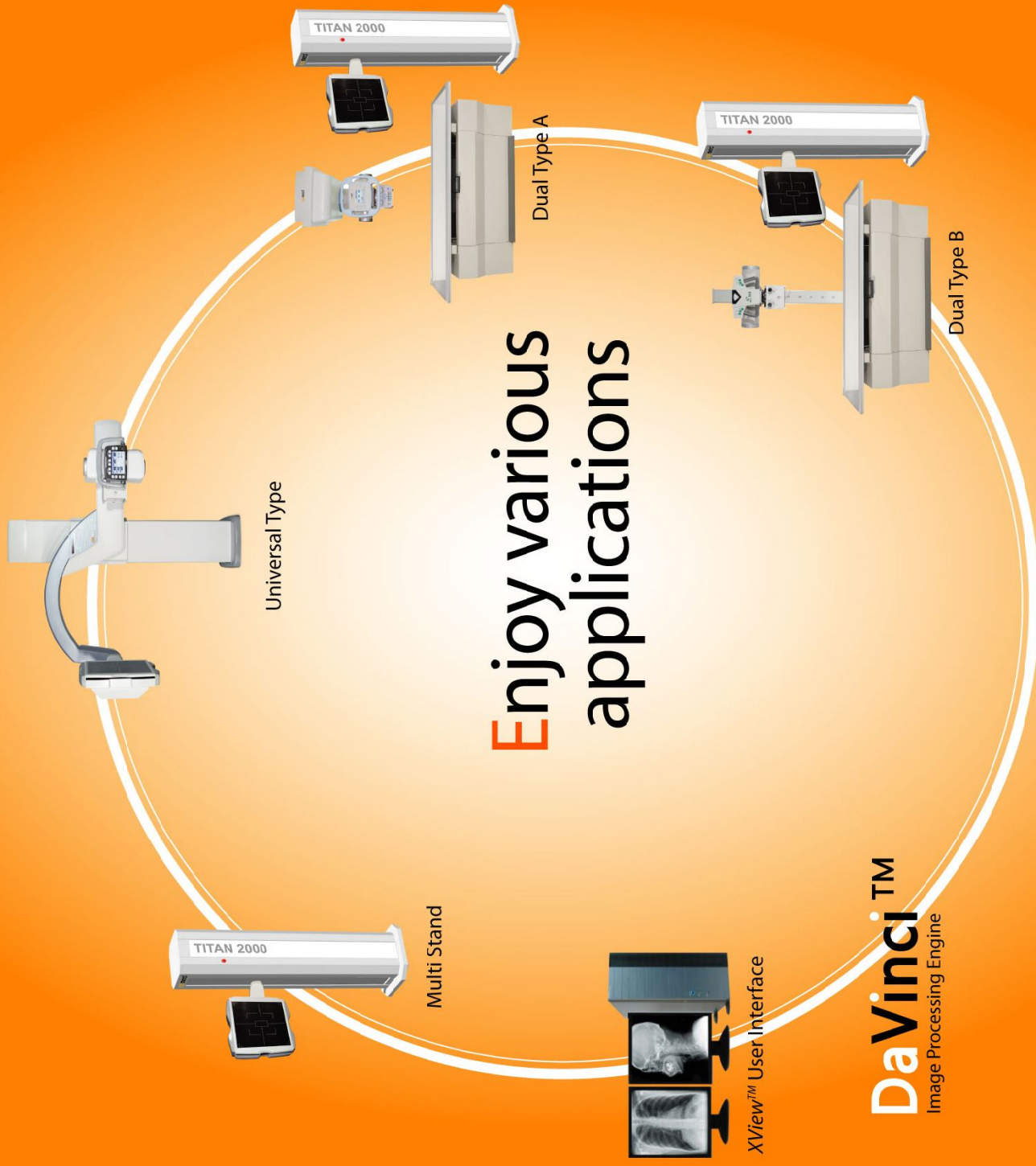
Right Digital Radiography for your department?

Nowadays you will find yourself wondering between many different digital radiography equipments around the world.

What should you focus to make a right decision for your radiology department?

It's obvious and simple.

With Titan2000 and its variety range of system components, you will be satisfied with your decision.



Maximized Productivity

Take a close look at Titan2000. What you will see are the latest technology applied components.

Multi purpose U-Arm frame for table and stand position by one detector



U-Arm system is designed to fit in any medical environment from small clinic to large medical center. From chest to table position, most applications in vertical and horizontal positions are easily available.

Double detector system Titan2000 dual enables the maximum productivity and applications for your radiology department

Dual detector system with Ceiling suspended tube stand



Dual system with Ceiling tube stand consists of Ceiling suspended tube stand with dual detectors at the table and multi stand. All applications with Ceiling suspension provides the highest flexibility.

Dual detector system with Floor mounted tube stand



The hospital which does not need Ceiling tube stand can install floor mounted Tube stand at reasonable price instead of Ceiling Tube stand. Floor mounted tube stand is the most economical solution covering most of your radiography needs.

Single detector system with Ceiling tube stand



Digital environment can be achieved with smaller budget with Titan2000 multi. The system uses only one detector but its variable and fast positioning with Ceiling tube stand provides the combination of many applications at low budget.

Smooth workflow, Increased Efficiency

Filmless procedure is more convenient and faster compare to conventional radiography system. Smooth workflow will prevent possible time loss and enables you to spend more time with your patients.
Image diagnosis rate is increased and helps to discover illness in earlier stage.
Thanks to Titan2000, you will enjoy increased efficiency with reduced cost and higher patient throughput.

Operation within your fingertip

XView™ software guides you to digital radiography environment.
You have full control of the system using XView™ including patient registration, generator control, image acquisition & processing, modification, and finally transfer to PACS.

Having Titan2000, now you take one step forward to network with radiologists around the world.



XView™

Image acquisition, processing, and Viewing Software

Patient Registration

- Various patient information input method
 - Manual Input
 - Import from Worklist / DB file format
 - Barcode System

System Control

- Selection of APR (adjustable APR settings)
- Auto Collimator control
- Four point control (kv, mA, Time, mAs)
- AEC control
- Generator control

Image Viewer

- Thumbnails function
- Icon driven window / level control, magnification, measure and more
- Full Spine function
- DICOM Import / Export
- JPEG, TIF and various image file format
- Direct DICOM Printing
- Report Function with Paper printer



PACS

Creative Image Management!

Efficient management of patient images enables effective diagnosis.

With powerful XView™ in Titan2000, which is fully compatible with DICOM 3.0 and HL7, you will experience higher stage of medical image management.

- ✓ **Viewer Solution**
- ✓ **DICOM Gateway**
- ✓ **DICOM Print**
- ✓ **DICOM CD-View**



Enjoy our Experience, DaVinci™

Experience DaVinci™ image processing engine powered by comed's accumulated experience over 10 years in digital radiography.
DaVinci™ ensures high quality image by preset parameters for optimized image coupled with numerous APR. DaVinci™ also enables you to set various parameters by user preferences.

Efficient Work with XView™

Titan2000 is ready for exam within few seconds after exposure, which reduce patient's waiting time.

XView™ provides clearly user friendly interface and variety of image viewing to modification to enhance image quality.

Combined with SView™(PACS solution), you can build your own department PACS system and experience numerous advantages from digital network environment.



Feel cutting edge technology with a single touch

What can you expect from digital radiography system in terms of reliability? You can put your trust on performance & reliability of Titan2000 for everyday operation. That is why Titan2000 equipped with the latest technology should be your choice. Titan2000 is strictly designed and backed by comed technology with accumulated experience to fit all specific needs of current medical environment.

Advanced Technology in Titan2000

Flat Panel Detector presents highest quality image while strictly controlling optimized radiation dose.

In addition, *DaVinci™* image processing technology achieves accurate details and eliminate processing artifacts.

Convenient and Simple Control

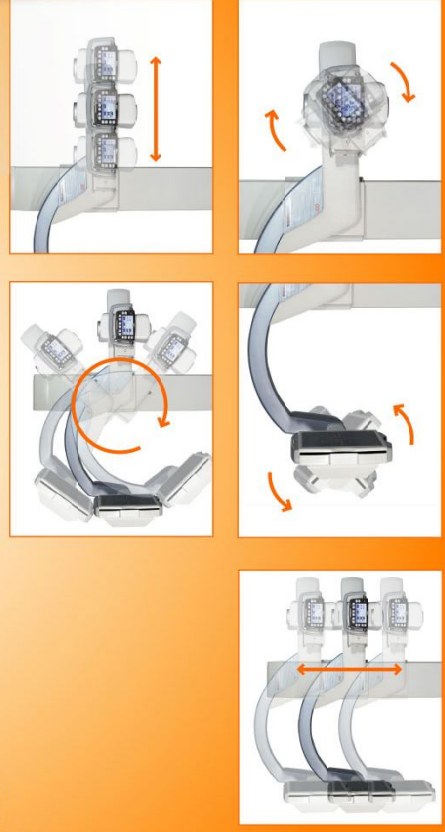
Operators request ergonomic design as well as ease of use in operation. Titan2000 utilizes U-Arm and floor mounted stand which significantly reduces space requirement for medical facilities.

Motorized movement control by touch panel console and remote controller enables simple and easy operation.



Diverse Application for your daily Operation

Titan2000 comes with diverse application. From erect to supine position, all major body parts are easily covered

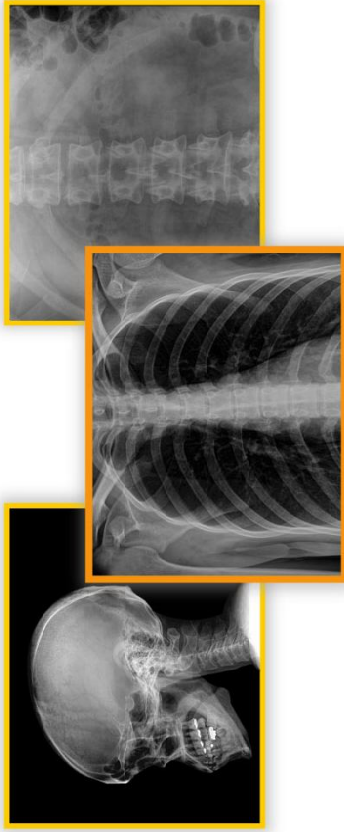


Expanding Possibilities

Titan2000 Multi stand is to pair with various types of X-ray tube to build full digital radiography system.

Motorized movement controlled by workstation enables easy image acquisition with ceiling X-ray tube and stand alone type tubes.

With its compact size, Titan2000 Multi is welcomed by any radiography department is in the world.



Superb Image Quality

Generator, detector, and image software play major roles in high image quality. And Titan2000 Surpasses our image quality standards.

In pursuit of the best image quality, Titan2000...

- is empowered by unique image processing engine *Dalvinc™*
- accurately controls High Frequency generator
- is equipped with effectively designed detector

High Frequency Generator

Stable generator is essential to all digital radiography systems. Comed generators are specially designed to digital radiography system with various features.

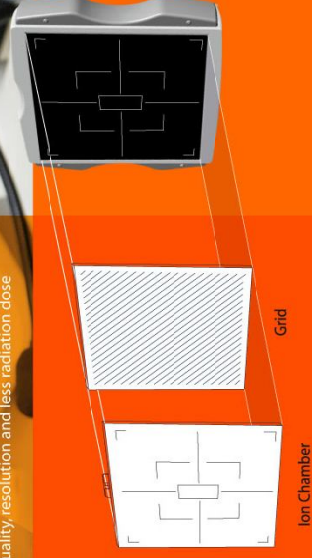


- **High Frequency Inverter**
From 40 to 80kW, 300 to 1,000mA, comed provides various range of generators with stabilities
- **Proven Stability**
Globally installed over 1,000 units and proving its guaranteed reliability
- **Self Diagnostic Circuitry**
Reports error codes of possible malfunction
- **Overload Protection System**
Connection with temperature sensor in X-ray tube enables auto disconnection when overheated
- **One touch control from Workstation**
Generator control is fully operated by workstation
- **Auto Exposure Control**

Flat Panel Detector

Digital X-ray Detector is a device which can change invisible x-ray to Digitalized diagnostic image

The latest TFT array Technology is applied to Flat panel Detector. It has better image performance than other digital images with high quality, resolution and less radiation dose





↶ **Operating Console**
Touch Panel LCD for main frame operation



↶ **Tube Movement**
Motorized Tube rotation for various application



↶ **Auto Collimator**
Full motorized auto collimator for accurate radiation control

For your Comfort and Safety

Titan2000 offers various features for your safety and comfort



↶ **Auto Exposure Control**
Accurate exposure control for less radiation dose



↶ **Position Display**
Displays SID, rotation angle, and height of U-Arm(FID)

↶ **Automated System**

Position Memorized Feature enables the system to automatically move to preset positions. For flexible application, you can manually move tube and detector rotation



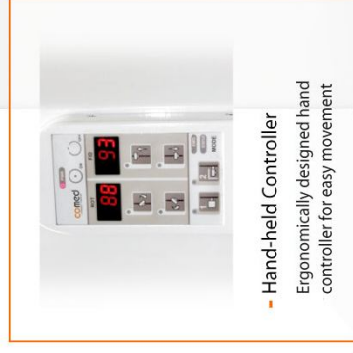
↶ **Collision Protection**
Prevents possible accidental collision in all cases automatically



↶ **Emergency Stop Button**
User can cease the system with Emergency Stop Button in case of emergency

Reliability is the core of medical device

Users keep themselves in high level of concentration constantly during operation. Nevertheless, some applied patient safety features into Titan2000 for any possible safety accidents.
Emergency stop switch ceases all movements of system immediately and detect sensors prevent any accidental collision by initiating auto-stop.



↶ **Hand-held Controller**
Ergonomically designed hand controller for easy movement



Different Level of Customer Service

Our customer satisfaction policy assures trustful partnership before, during, and after the purchase. While the system is in your medical facility, our service experts will provide best quality customer service now and in the future.

Service Excellence

Principles of comed philosophy are prompt response in customer service and proving best quality products. Global service network with highly qualified engineers, immediate response service personals, and flexible supply of spare parts will make you to undergo to a new stage of excellence.

3P Customer Satisfaction

Since its establishment in 1995, comed has put priority to customer's satisfaction. By setting 3P Customer Satisfaction Policy, we have contributed for higher standard of customer service.



Beyond Your Expectation...

Titan2000 equipped with the latest technology from comed ensures your satisfaction with highest image quality and system reliability